

AKM Filter Media

Features:

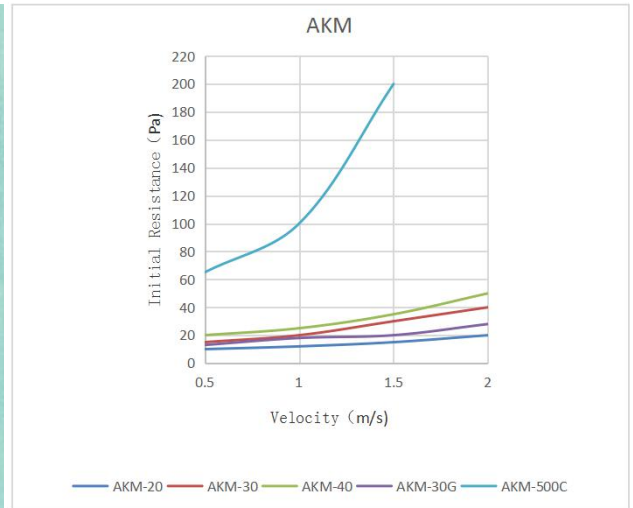
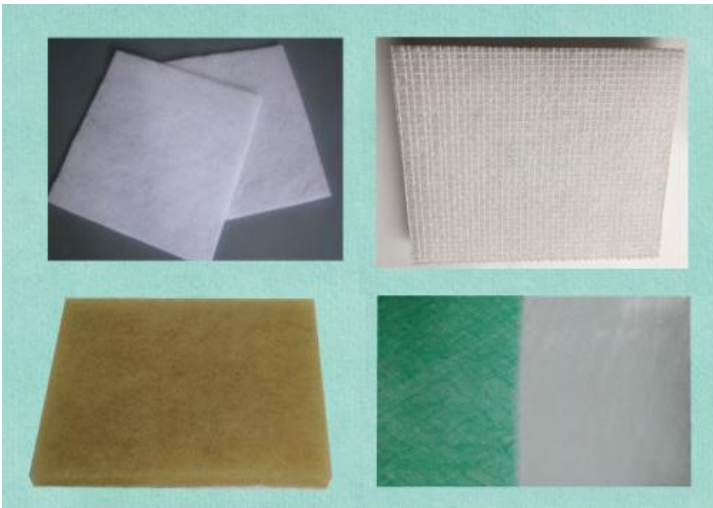
Prefiltration applicable to different industrial & civil ventilation systems.

Various types optionally available.

Composition: synthetic, glassfiber.

Max. working temperature: 80°C-250°C.

Max. working R.H.: 100%.



Technical Data:

Model	Filter Class EN779	Rated Velocity(m/s)	Initial Resistance(Pa)	Thickness(mm)
AKM-20 filtermat	G2	1.5	15	5-8
AKM-30 filtermat	G3	1.5	30	12-15
AKM-40 filtermat	G4	1.5	35	20
AKM-30G paint stop	G3	0.5-2.5	25-35	50
AKM-40G paint stop	G4	0.5-2.5	30-45	100
AKM-500C ceiling filtetmat	F5	0.25	38	20
AKM-500IC ceiling filtetmat	F5	0.25	20	22
AKM-30R railway filtermat	G3	1.5	30	14
AKM-40R railway filtermat	G4	1.5	49	20

Note:

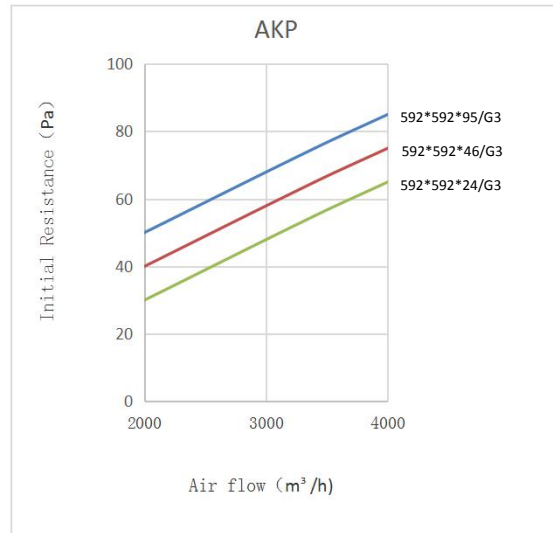
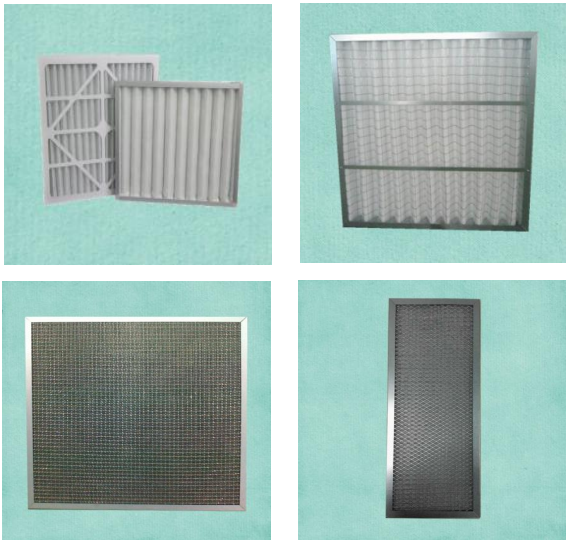
1. Dimensions can be custom-made on request.

AKP Panel Filter

Features:

- Easy to install.
- Eco-friendly.
- Pre-filtration for industrial & civil ventilation system.

Frame material: Water-proof cardboard/Al./Galvanized steel/Stainless steel
Medium: Synthetic/glass fiber/Nylon/Stainless steel mesh/Al.mesh
Max. working temperature: 80°C-400°C.
Max. working R.H.: 100%.



Technical Data (based on pleated synthetic media):

Model	Filter class EN779	Dimension(mm)	Rated airflow(m³/h)	Initial resistance(Pa)
AKP-30/40	G3/G4	287*592*24	1700	75/80
AKP-30/40	G3/G4	592*592*24	3400	75/80
AKP-30/40	G3/G4	287*592*46	1700	65/70
AKP-30/40	G3/G4	592*592*46	3400	65/70
AKP-30/40	G3/G4	287*592*95	1700	55/60
AKP-30/40	G3/G4	592*592*95	3400	55/60

Note:

- 1.Special size can be custom-made.
- 2.Recommended final resistance:150-200Pa.

AKB Pocket Filter

Features:

Large filtration area; long operation-life.

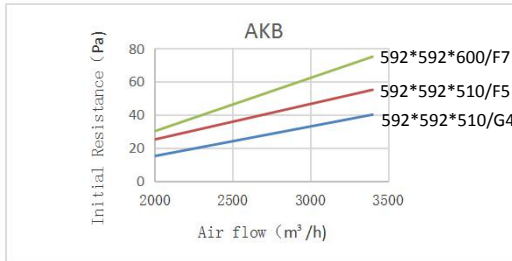
Pre-filtration & main filtration with a high airflow in civil or industrial plants.

Frame material: Galvanized sheet/Al./Plastic.

Medium: synthetic/glass fiber.

Max. working temperature: 80°C-120°C.

Max. working R.H.: 100%.



Technical Data:

Model	Filter Class EN779	Dimension(mm)	Rated airflow(m³/h)	Initial resistance(Pa)
AKB-30	G3	287*592*510 3P	1700	30
AKB-30	G3	592*592*510 6P	3400	30
AKB-40	G4	287*592*510 3P	1700	40
AKB-40	G4	592*592*510 6P	3400	40
AKB-50	F5	287*592*510 3P	1700	55
AKB-50	F5	592*592*510 6P	3400	55
AKB-60	F6	287*592*600 4P	1700	60
AKB-60	F6	592*592*600 8P	3400	60
AKB-70	F7	287*592*600 4P	1700	75
AKB-70	F7	592*592*600 8P	3400	75
AKB-80	F8	287*592*600 4P	1700	100
AKB-80	F8	592*592*600 8P	3400	100
AKB-90	F9	287*592*600 4P	1700	130
AKB-90	F9	592*592*600 8P	3400	130

Note:

1. Other sizes are available.
2. Welded & self-supporting with 'diamond spacer' type is available.
3. Fiberglass bag is available for oily fogs or chemical industry.

AKV 'V'-typed Compact Filters

Features:

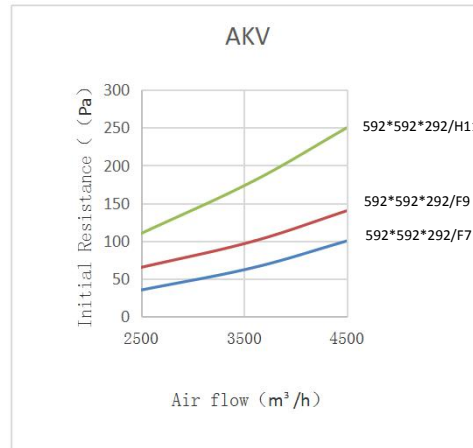
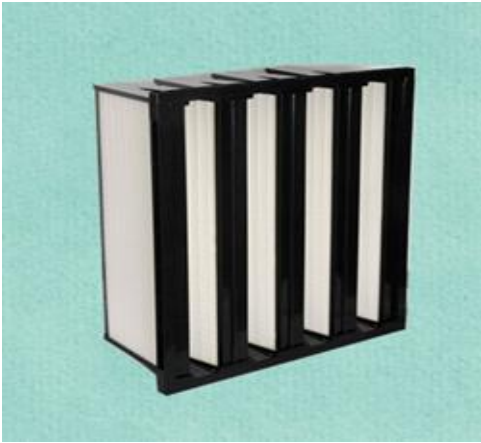
Big filtration area; resistant to ultra-high volume.

Frame material: plastic/galvanized sheet.

Medium: ultra-fine glassfiber/Sythetic fiber.

Max. working temperature: 80°C/200°C.

Max. working R.H.: 100%.



Technical Data:

Model	Filter Class EN779	Dimension(mm)	Rated airflow(m³/h)	Initial resistance(Pa)
AKV-60	F6	287*592*292	2120	95
AKV-60	F6	592*592*292	4250	95
AKV-70	F7	287*592*292	2120	110
AKV-70	F7	592*592*292	4250	110
AKV-80	F8	287*592*292	2120	130
AKV-80	F8	592*592*292	4250	130
AKV-90	F9	287*592*292	2120	150
AKV-90	F9	592*592*292	4250	150
AKV-H11	H11	287*592*292	2120	250
AKV-H11	H11	592*592*292	4250	250
AKV-H13	H13	287*592*292	2120	380
AKV-H13	H13	592*592*292	4250	380

Note:

1. Size 490*592*292 are available.
2. Frame Depth=400mm is available.
3. Compact GT type is available.
4. Carbon combined product is available.

AKR Aluminum-Separator filters

Features :

various filtration area to meet with different air volume.

Frame material: Galvanized sheet/Al./Stainless steel/MDF.

Flange: None/Single/Double.

Faceguards: None/Single/Double.

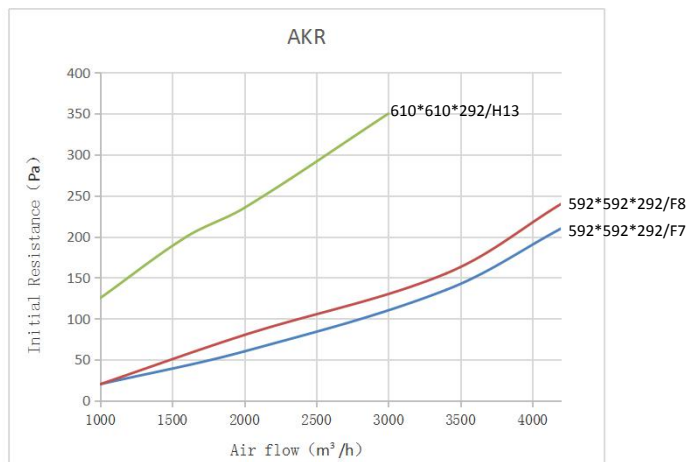
Medium: Micro glassfiber.

Separator: Corrugated Aluminum.

Gasket: EPDM/PU/glassfiber/Silicon.

Max. working temperature: 80°C,250°C,300°C,450°C.

Max. working R.H.: 100%.



Technical Data:

Model	Filter Class EN779	Dimension(mm)	Rated airflow(m³/h)	Initial Resistance(Pa)
AKR-60	F6	592*592*292	3400	110
AKR-60	F6	287*592*292	1700	110
AKR-70	F7	592*592*292	3400	135
AKR-70	F7	287*592*292	1700	135
AKR-80	F8	592*592*292	3400	155
AKR-80	F8	287*592*292	1700	155
AKR-H13	H13	610*610*150	1000	235
AKR-H13	H13	630*630*220	1500	235
AKR-H13	H13	610*610*292	2000	235
AKR-H13	H13	610*610*292	3400	300

Note:

- 1.Other size like can be made.
- 2.Recommended final resistance: 250-450Pa.

AKHV High Flow Filter

Features:

Ultra-large filtration area in compact space.
Applicable to high airflow up to 4000m³/h.

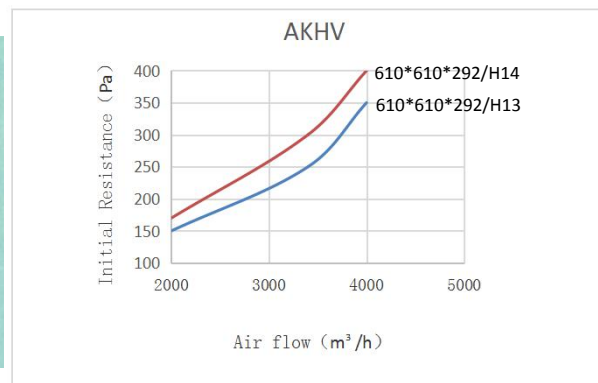
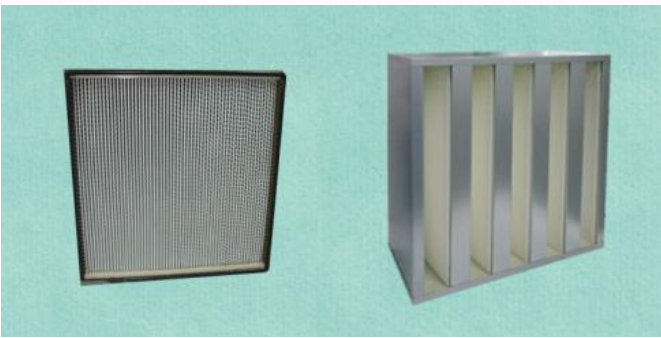
Frame material: Galvanized steel/plastics/Stainless steel.

Medium: Micro glassfiber.

Gasket: EPDM/Endless PU foam.

Max. working temperature: 80°C,250°C.

Max. working R.H.: 90%.



Technical Data:

Model	Filter Class EN1822	Dimension(mm)	Rated airflow(m ³ /h)	Initial Resistance(Pa)
AKHV-H11	H11	610*305*292	2000	200
AKHV-H11	H11	610*610*292	4000	200
AKHV-H13	H13	610*305*292	1700	250
AKHV-H13	H13	610*610*292	3400	250
AKHV-H14	H14	610*305*292	1700	300
AKHV-H14	H14	610*610*292	3400	300

Note:

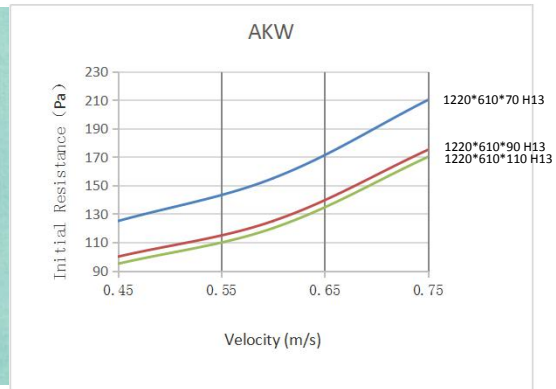
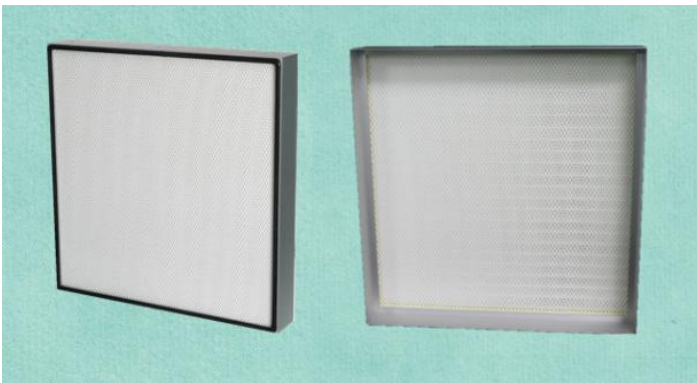
1.Types with other sizes & class are available.

AKW Minipleat Filter

Features :

Small space occupation; light weight.
Different filter class optional available.

Frame material: Al./Galvanized steel/MDF.
Medium: Glassfiber/synthetic .
Gasket: dove-tailed EPDM/Endless PU.
Faceguards: powder-coated mesh、 PE.
Seal type: mechanical/fluid.
Max. working temperature: 80°C/220°C.



Technical Data:

Model	Filter class EN779/EN1822	Dimension(mm)	Rated airflow(m ³ /h)	Initial resistance(Pa)
AKW-60	F6	610*610*95	3400	100
AKW-70	F7	610*610*95	3400	140
AKW-80	F8	610*610*95	3400	160
AKW-H11/H13/H14	H11/H13/H14	610*610*70	600	70/100/150
AKW-H11/H13/H14	H11/H13/H14	1220*610*70	1200	70/100/125
AKW-H11/H13/H14	H11/H13/H14	610*610*90	800	80/100/150
AKW-H11/H13/H14	H11/H13/H14	1220*610*90	1600	80/100/125
AKW-H11/H13/H14	H11/H13/H14	610*610*110	1000	70/100/150
AKW-H11/H13/H14	H11/H13/H14	1220*610*110	2000	70/100/125
AKW-H11/H13/H14	H11/H13/H14	610*610*150	1000	70/100/150
AKW-H11/H13/H14	H11/H13/H14	1220*610*150	2000	70/100/150

Fluid-sealed HEPA

AKWFS-H13/H14/U15	H13/H14/U15	610*610*81	600	100/150/180
AKWFS-H13/H14/U15	H13/H14/U15	1220*610*81	1200	100/150/180
AKWFS-H13/H14/U15	H13/H14/U15	610*610*110	800	100/150/180
AKWFS-H13/H14/U15	H13/H14/U15	1220*610*110	1600	100/150/180

Note:

1. Types with other sizes & class are available.

AKT Oven filters

Features :

Various product types applicable to different air volume or temperature.

Frame material: Galvanized sheet/Al./Stainless steel.

Flange: None/Single/Double.

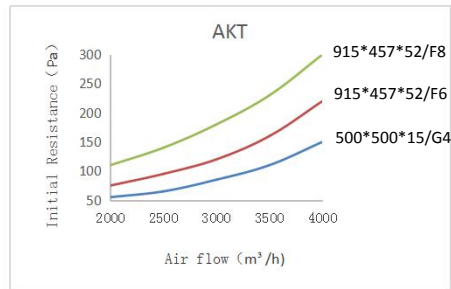
Faceguards: Single/Double.

Medium: (Micro)glassfiber.

Separator: Corrugated Aluminum , glassfiber teeth.

Gasket: glassfiber ring/Silicon rubber.

Max. working temperature: 180°C,250°C,450°C.



Technical Data:

Model	Filter Class	Dimension(mm)	Rated airflow(m³/h)	Initial Resistance(Pa)
AKTP-30/40	G3/G4	500*500*15	2400	90/95
AKTP-30/40	G3/G4	610*610*15	3400	90/95
AKTR-60	F6	915*457*52	2000	75
AKTR-60	F6	610*610*78	1500	65
AKTR-60	F6	610*457*78	1100	65
AKTR-60	F6	610*610*292	3400	80
AKTR-80	F8	610*610*52	1500	90
AKTR-80	F8	915*457*52	2000	110
AKTR-80	F8	610*610*78	1500	80
AKTR-80	F8	610*610*150	2000	90
AKTR-80	F8	610*610*292	3400	120
AKTR-H13	H13	610*610*150	1000	235
AKTR-H13	H13	610*610*220	1500	235
AKTR-H13	H13	610*610*292	2000	235
AKTV-H11	H11	610*305*292	2000	200
AKTV-H11	H11	610*610*292	4000	200
AKTV-H13	H13	610*305*292	1700	250
AKTV-H13	H13	610*610*292	3400	250
AKTV-H14	H14	610*305*292	1700	300
AKTV-H14	H14	610*610*292	3400	300

Note:

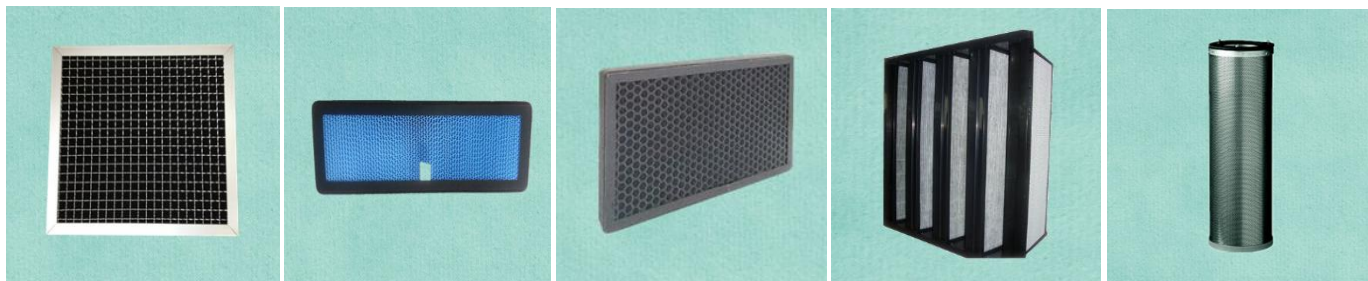
1. Other size like can be made.
2. Recommended final resistance: 250-450Pa.

AKG Gas Phase Adsorber Filters

Features :

Variety of product and media types applicable to different gaseous contamination.

Frame material:	Galvanized sheet/Stainless steel.
Flange:	None/Single/Double.
Faceguards:	None/Single/Double.
Medium:	Activated carbon/Chemically Treated Carbon/Cold Catalyst.
Separator:	Honeycomb/plastic sheet.
Gasket:	Polyurathane/Silicon Rubber.
Operation conditions:	Concentrations in ppb or ppt.



Technical Data:

Model	Filter Class	Dimension(mm)	Rated airflow(m ³ /h)	Initial Resistance(Pa)	备注
AKGP panel filter	G4	592*592*10	3400	95	activated carbon impregnated synthetic 活性浸渍碳无纺纤维
AKGP panel filter	G4	592*592*46	3400	75	activated carbon impregnated synthetic 活性浸渍碳无纺纤维
AKGB bagfilter	G4	592*592*380 6P	3400	65	activated carbon impregnated synthetic 活性浸渍碳无纺纤维
AKGB bagfilter	G4	287*592*380 3P	3400	65	activated carbon impregnated synthetic 活性浸渍碳无纺纤维
AKGV Box filter	F9	592*592*292	3400	220	high efficiency sythetic combined with activated-carbon granules 活性碳粒无纺布复合
AKGV Box filter	F9	287*592*292	3400	220	high efficiency sythetic combined with activated-carbon granules 活性碳粒无纺布复合
AKGG Box filter		592*592*292	3400	250	chemical treated activated-carbon granules 催化活性碳颗粒
AKGG Box filter		287*592*292	3400	250	chemical treated activated-carbon granules 催化活性碳颗粒
AKGC Cartridge		610*610	3400	250	chemical treated activated-carbon granules 催化活性碳颗粒
AKGC Cartridge		508*610	3400	250	chemical treated activated-carbon granules 催化活性碳颗粒
AKGC Cartridge		305*610	3400	250	chemical treated activated-carbon granules 催化活性碳颗粒

Note:

1. Other size like can be made.
2. Recommended final resistance: 250-450Pa.

AKAP-MW Air-purifier Medium filter

Feature:

Minipleat type with stable efficiency & Ultra-low resistance.

Frame material: cardboard,AL,PET,Aluminum etc.

Media: glassfibers,synthetic fibers,electret fibers.

Type: panel,cylinder.

Filter class: F5-F9(50%-99%@PM2.5).

AKAP-HW Air-purifier HEPA

Feature:

Minipleat type with stable efficiency and low resistance(100%@PM2.5).

Frame material: cardboard,AL,PET,Aluminum etc.

Media: glassfiber media,synthetic fiber.

Type: panel,cylinder.

Filter class: H10-H14(100%@PM2.5).

AKAP-C Chemical filter

Feature:

Effectively eliminate harmful gas VOC including Tolune & formaldehyde.

For different target harmful gas,corresponding chemical-impregnated activated carbons are optinally available.

Frame Material: Cardboard/PET etc.

Medium: chemical-impregnant carbon

Type 1 - Remove Formaldehyde

Type 2 - Remove Ammonia

Type 3 - Remove VOC

Type 4 - Remove smoke

Type 5 - Remove SO₂ , NO₂,O₃

Absorptivity: 95%



Note:

1.Sizes or types can be customized on requirement.

Airknow TM Cabin-filter

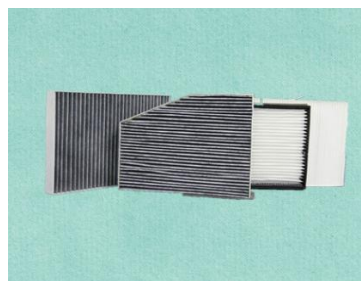
Feature:

Quality on same level with original equipped type,dust or combine.

Frame material: PET or plastic.

Media: synthetic fiber, activated-carbon.

Efficiency : >95%@PM2.5;>90%@NH3 & formaldehyde.



All Models of GM are available:

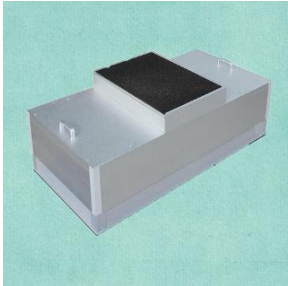
Item	Vehicle Model	Engine Power	Year	AST Code	Dimensions	Media
1	Buick Excelle	1.6/1.8	2003-2013	AKCC 1000	222*190*25	dust media
2	Buick Excelle	1.5	2013-2016	AKCC 1001	222*190*25	dust media
3	Buick Sail	1.2/1.4	2010-2014	AKCC 1001	222*190*25	dust media
4	Buick Sail	1.3/1.5	2015-	AKCC 1001	222*190*25	dust media
5	Buick Cruze	1.6T/1.6/1.8	2009-2014	AKCC 1003/AKCS 1003	240*204*35	dust/hybrid media
6	Buick Cruze	1.4T/1.5	2014-	AKCC 1004/AKCS 1004	240*204*30	dust/hybrid media
7	Buick Excelle GT/XT	1.6/1.6T/1.8	2010-2015	AKCC 1003/AKCS 1003	240*204*35	dust/hybrid media
8	Buick Excelle GT/XT	1.4T/1.5	2015-	AKCC 1003/AKCS 1003	240*204*35	dust/hybrid media
9	Buick Verano	1.5/1.5T	2015-	AKCC 1004/AKCS 1004	240*204*30	dust/hybrid media
10	Buick Regal	1.6T/2.0T/2.0/2.4	2008-	AKCC 1003/AKCS 1003	240*204*35	dust/hybrid media
11	Buick Lacrosse	2.0T/2.4/3.0	2008-2011	AKCC 1003/AKCS 1003	240*204*35	dust/hybrid media
12	Buick Lacrosse	2.0T/2.4/3.0	2011-2016	AKCC 1003/AKCS 1003	240*204*35	dust/hybrid media
13	Buick Lacrosse	1.5T/2.0T	2016-	AKCC 1004/AKCS 1004	240*204*30	dust/hybrid media
14	GL8	2.5/3.0	2000-2010	AKCS 1002	216*104*57 (1*2)	hybrid
15	GL8	2.4/3.0	2010-2016	AKCS 1005	216*120*48 (1*2)	hybrid
16	GL8	2.0T	2016-			
17	Buick Encore	1.4T	2012-	AKCC 1003/AKCS 1003	240*204*35	dust/hybrid media
18	Buick Envision	1.5T/2.0T	2015-	AKCC 1004/AKCS 1004	240*204*30	dust/hybrid media

Note:

1. All Models of GM are available.
- 2.Types & sizes can be designed on request.

Clean-room Equipment

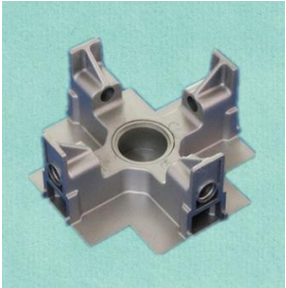
FFU



Teardrop lamp



Ceiling grid



Air shower



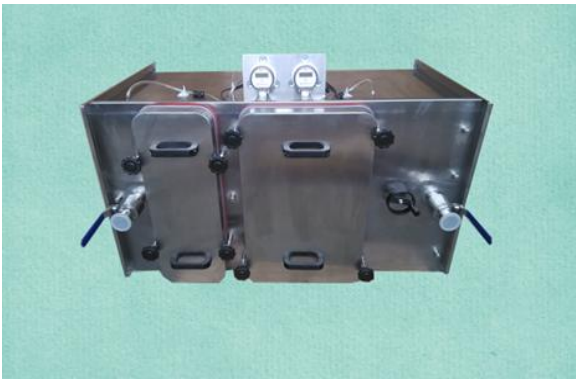
HEPA Box



HEPA Box



BIBO System



BIBO System

